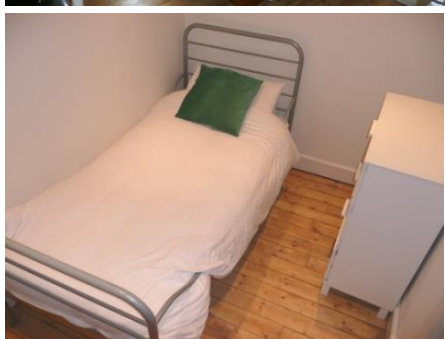
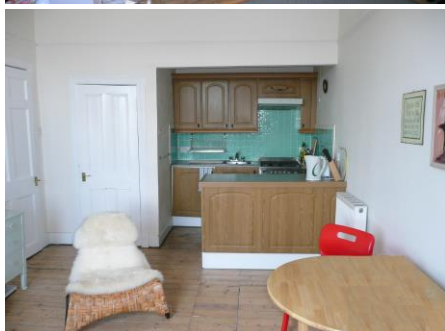


7/8 PIERSFIELD GROVE EDINBURGH EH8 7BT



TO LET £695 PCM

Bright One bedroom plus One Box Bedroom top floor flat located in Piersfield, situated close to Meadowbank and the City Centre. The furnished accommodation comprises secure entry phone and well maintained common stair, entrance Hallway, Living Room/Kitchen, good sized double Bedroom, box Bedroom with Bed and Bathroom with shower and half bath. The property further benefits from Gas Central Heating and Double Glazing. There is shared rear garden and unrestricted on street parking.

The property is ideally located close to a wide range of local amenities and shopping facilities with nearby public transport links to the city centre and surrounding areas. Morrisons Superstore is on your doorstep and Sainsbury's can be found at the Meadowbank Retail Park also nearby. Further variety shopping is available on nearby Leith Walk, home to the Omni Centre cinema and leisure complex, Playhouse Theatre and a broad selection of bars, restaurants and cafes. Holyrood Park and Arthur's Seat are close by, as is Meadowbank Sports Centre.

Arrange a viewing Tel 0131 510 8283



- Available: 11 Feb 2019
- Council Tax Band: B
- No DSS
- No Smokers
- No Pets
- Deposit Required: £795
- EPC Rating - D
- Landlord Reg: 309159/230/24341